

# Flow Indicating Totalizer

## FIT 100 Series

The FIT -100 series is a compact sized Totaliser. Totaliser is designed to Display. Totaliser can accept input from transmitter operating in Linear or Square Root mode. Flow is integrated to 8 Digit Totaliser, from which 6-Digits can be easily viewed on Display window of Totaliser and remaining 2 digits can be viewed by simple press of an enter button. The 4-Digit Indicator is provided to indicate the instantaneous Flow rate in % or in

### Advantages

- Compact in Size
- Field Programmable Parameters
- Virtual 8 digit Display available to monitor Totalised Flow
- Isolated 4-20mA D.C. output proportional to Flow Rate
- Linear or Square Root operation
- Better Resolution with 4 Digit Display for instantaneous Flow Rate

### Common technical specification of Flow Indicating Totaliser

Input	: 4 - 20 mA dc / 1 - 5 V
Output	: 4 - 20 mA dc in max. 600 load, Proportional to Flow Rate
Accuracy	: 0.25 % of Full Scale for Flow as well as Totalisation
Operating Ambient	: 0 - 50 °C Temperature
Temperature Drift	: 0.015 % / °C maximum of Full Scale
Humidity	: 90 % R.H. maximum non
Alarm Settings	: Two Nos. on Instantaneous Flow
Operation	: Linear / Square Root -
Keyboard	: Four No. Keys for Programming
Password Protection	: Provided for all
Display Totalisation	: 6 Digit, 0.3", 7 segment LED 4 Digit, 0.5", 7 segment LED for Flow Rate Indication



PC Communication : Port Types RS485(default)  
RS232(optional)  
Protocol MODBUS RTU

Transmitter Power Supply : 24 to 26 V dc, @

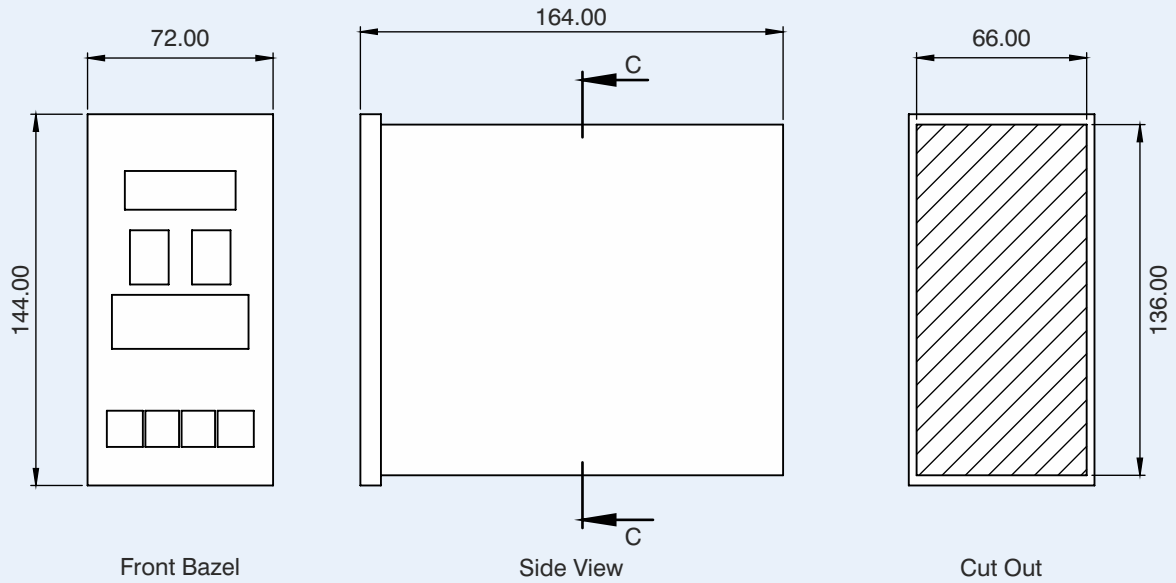
Power Supply : 85V to 265V AC,  
Single Phase (Universal)

### Technical specification for FIT-100D-AB

Model Number	: FIT-100D-AB (Alarm & Batch Operation)
Dimensions	: Bazel - 96mm ( H ) x 96mm ( W ) Cutout - 92mm ( H ) x 92mm ( W ) Max. Depth including terminals - 145mm
Mounting	: Flush
Enclosure	: POLYCARBONATE as per DIN

### Technical specification for FIT-100PM

Model Number	: FIT-100PM
Dimensions	: Bazel - 144mm (H) X 72mm Cutout - 138mm (H) X 68mm (W) Max. Depth including terminals - 185 mm
Mounting	: Panel
Enclosure	: AB
Data Logging	: 6500 OR 13000 number of can be save



## ORDERING INFORMATION

Sample code explained: FIT-100D - A - RS2

**FIT-100D**

Flow indicator and : FIT-100D  
totaliser with LED display  
Flow indicator and : FIT-100L

**A**

### Alarm or batching option

Alarm required  
Batching required : B  
No alarm or : O  
batching required

**RS2**

### Communication

RS-232 : RS2  
RS-485 : RS4

**U**

### Power Supply

85-265 V AC, 50 Hz : U

Note: Either alarm or batching is available.  
Both are not available simultaneously.

Due to continuous development specifications are subject to change without prior notice.



### Manas Microsystems Pvt. Ltd.

EL 54, Electronic Zone,  
J-block, MIDC Bhosari,  
Pune 411026.  
Maharashtra, India.

Tel: 020 27127044/45  
Mob: +91 8484039026  
mktg@manasmicro.com  
www.manasmicro.com

We are certified with:

ISO/IEC 17025:2017 | ISO 9001:2015 | ISO 14001:2015 | OHSAS 45001:2018

